

UPster U 500G M2 with Thermolabel

Undercounter glass washer

MEIKO's new UPster® U M2 range of undercounter dishwashers pulls out all the stops when it comes to professional warewashing technology, offering efficient cleaning performance, easy operation, maximum flexibility, and exceptional value for money. The perfect choice for your wash-up area. Simply plug it in and you're ready to go!

Execution for: Saudi Arabia

Dishwashing machine

Fresh water line: Soft warm water 0-3°dH
3-phase current: 3N PE 400V 60Hz
Thermolabel



Technical data

Rack capacity/h (theoretical)

40 / 30 / 15 racks/h

Programme cycle

90 / 120 / 240 s

Rack dimension

500 x 500 mm (540 x 500)

Entry height

315 mm

Dimensions (W x Hmin x D)

600 x 700 x 600 mm

Electrical feeding cable

3-phase current 3N PE 400V 60Hz*
Total connected load: 12.4 kW
max. rated current: 19.5 A

Local fuse protection

20 A

Machine protection class

IP X4

Equipment

Control system MIKE CPU1
Infrared interface for wireless communication
Leakage detector
Soft start
Boiler safety device
Drain pump
AktivPlus wash water filter system
Automatic self-cleaning when tank is drained
Thermolabel

Fresh water line

Air gap 'AA' in accordance with EN 1717 with booster pump

Fresh water supply

Minimum flow pressure 60 kPa / 0.6 bar in front of solenoid valve
Maximum pressure: 500 kPa / 5.0 bar
Max. supply water temperature 60 °C

Flow rate

5 l/min

Final rinse water quantity

2.6 liters/cycle

Boiler

Contents: 7.0 l

Heater: 7.50 kW
Temperature: 83 °C
Tank / boiler locked

Wash tank

Filling: 11.0 l
Heater: 4.00 kW
Temperature: 74 °C

Wash pump

Performance: 0.55 kW

Dosing of rinse aid

Hose pump (24 V) with time control
and suction lance

Detergent dosage

Hose pump (24 V) with time control
and suction lance

Material

Cladding: 1.4301
Wash tank: 1.4301
Boiler: 1.4404

Heat emission

for 20 programme cycles/h
total: 2.1 kW
perceptible: 1.4 kW
latent: 0.7 kW

Ventilation flow rate

270 m³/h

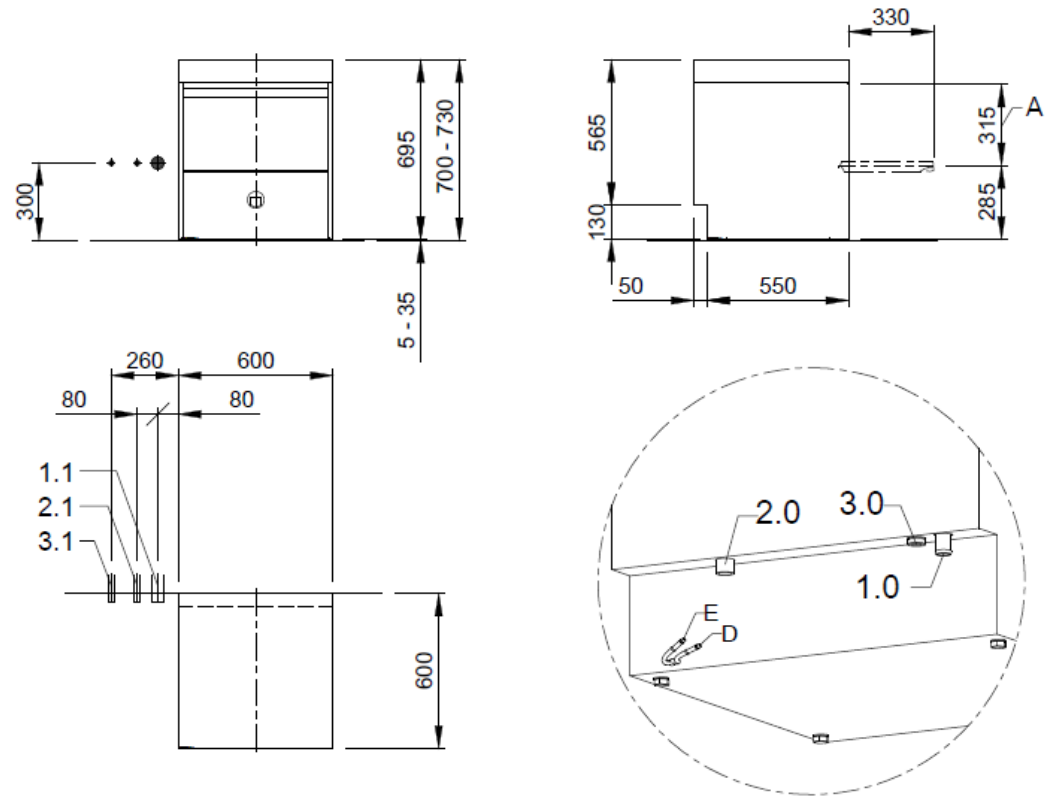
Steam emission

0.5 kg/h


**Emission sound pressure level at the
workplace (LpA)**

63 dB

1.0	machine connection: drain connection hose, DN 22 hose fitted as odour trap in interior of machine
1.1	drain (max. 700 mm above finished floor level), DN 50
2.0	Machine connection: fresh water supply, G 3/4"
2.1	Soft warm water 45-60°, DN 15, G 3/4 a max. 0,54 mmol/l CaCO ₂ (max. 3°dH) Flow rate: 5 l/min Minimum flow pressure: 60 kPa / 0.6 bar in front of solenoid valve Maximum pressure: 500 kPa / 5.0 bar stopcock and fine screen ≤ 25 µm
3.0	Machine connection: electrical connection cable 5G 2,5mm ²
3.1	electricity supply to the machine: 3N PE 400V ~ 60Hz nominal current / - capacity: 19.5 A / 12.4 kW Fuse protection: 20 A ⚡ Voltage equalising cable The master switch must be provided on site Electrical equipment suitable for supply voltage: 3N PE 380-415 V 60 Hz
6.0	Heat load of warewash area
6.1	for 10 programme cycles/h total 1.1 kW, perceptible 0.7 kW, latent 0.4 kW
all cables, pipes etc leaving machine 1,6 m	
the position of the connection piping can also be mirror-inverted!	
Machine Equipment	
(A) Entry height	
(D) Rinse agent pipe and suction lance	
(E) Detergent dosing unit with suction lance	
Thermolabel	



MP000403584.1.7
©COPYRIGHT by MEIKO

 MEIKO MIDDLE EAST FZE GoldDiamond Park, Building#6, office #206 P.O. Box 282365, U.A.E.-Dubai Phone +971 43 41 51 72 E-MAIL: wat@meiko.de		Revision	
		Reference	DISHWASHER STANDARD DRAWING / SAU
This drawing may not be neither passed to third parties for their information or copied or used for competitive purposes without our consent. All rights reserved. We reserve the right to make changes resulting from technical progress. This drawing was computer generated and is not subject to the checking and any release process; it is also not subject to change management. Please note: This document is only valid in conjunction with the conditions defined in Supplementary Sheet "Important Information". These can be requested from the manufacturer or downloaded from the Partnernet.		Type	UPSTER U 500G M2
		TYPE: CROCKERY	THERMOLABEL
Drawing-No.		Order-No.	
S00078828			
Scale	drawn:	checked:	
1:25	08.04.2020 m-iplan	08.04.2020 m-iplan	

SAU EN

©COPYRIGHT by MEIKO