

UPster U 400 – Undercounter glass and dishwasher

Get glassware and washware sparkling clean in next to no time!
Easy to use with an intuitive control panel and digital display.
Plus double-walled thermal insulation to keep the heat in
and minimise energy use. That's a pretty cool package!

Execution for: United Arab Emirates
Country of production: China

Glass and dishwasher
Fresh water line: Soft warm water 0-3°dH
Alternating current: 1N PE 230V 50Hz



Technical data

Rack capacity/h (theoretical)	30 / 20 / 15 racks/h
Programme cycle	120 / 180 / 240 s (glass / dish / dish intensive)
Rack dimension	400 x 400 mm
Entry height	300 mm
Dimensions (W x Hmin x D)	460 x 700 x 600 mm
Electrical feeding cable	Alternating current 1N PE 230V 50Hz* Total connected load: 3.7 kW max. rated current: 17.2 A
Local fuse protection	20 A
Machine protection class	IP X4
Equipment	MIKE control Infrared interface for wireless communication Soft start Boiler safety device Automatic self-cleaning when tank is drained
Fresh water supply	Minimum flow pressure 250 kPa / 2.5 bar in front of solenoid valve Maximum pressure 500 kPa / 5.0 bar Max. supply water temperature 60 °C
Flow rate	min. 0.22 l/s at 250 kPa/2.5 bar flow pressure
Final rinse water quantity	2.2 liters/cycle
Boiler	Contents: 4.2 l Heater: 3.00 kW Temperature: 65 °C, with dish wash programme 83 °C Tank / boiler locked
Wash tank	Filling: 11.0 l Heater: 2.00 kW Temperature: 60 °C

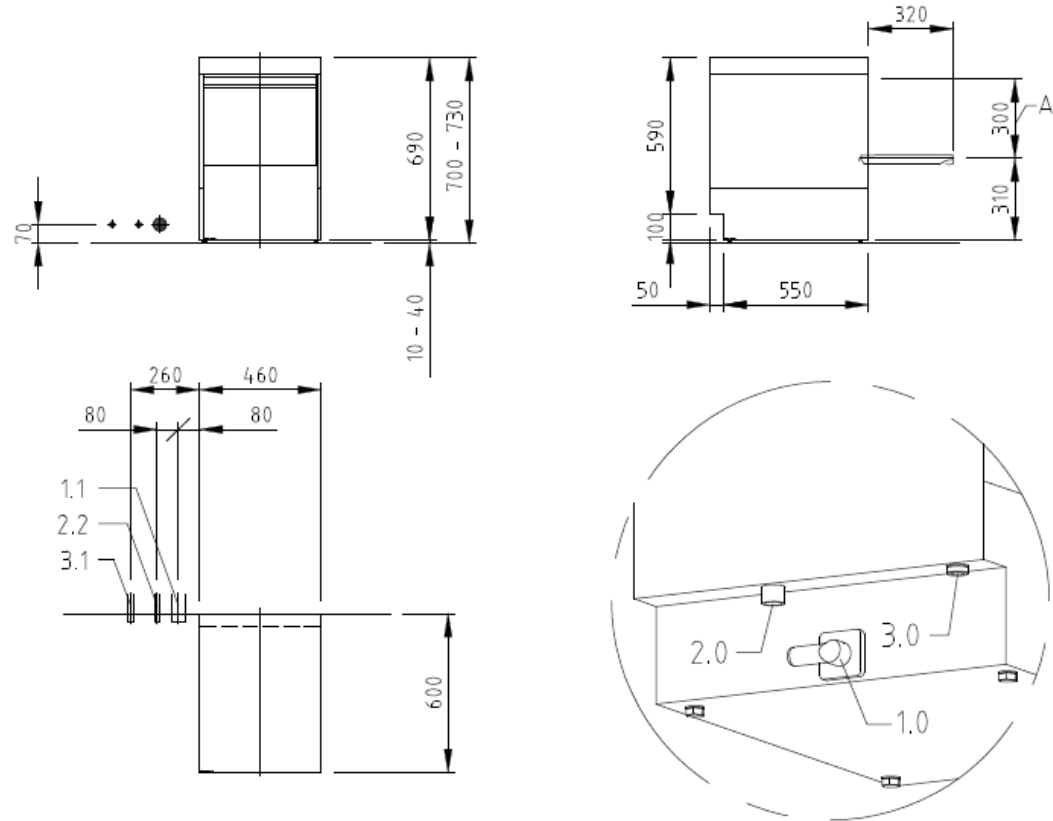
Wash pump	Performance: 0.55 kW
Dosing of rinse aid	Potential free terminals (changeable to 230V) for local dosing system
Detergent dosage	Potential free terminals (changeable to 230V) for local dosing system
Material	Cladding: 1.4301 Wash tank: 1.4301 Boiler: 1.4404
Heat emission	for 15 programme cycles/h total: 1.0 kW perceptible: 0.7 kW latent: 0.3 Kw
Ventilation flow rate	250 m ³ /h
Steam emission	0.5 kg/h
Emission sound pressure level at the workplace (LpA)	62 dB
Net / gross weight	45.0 kg / 54.0 kg (standard packaging)
Packaging dimensions (W x H x D)	560 x 900 x 690 mm (standard packaging)

***Note:**


Electrical equipment suitable for supply voltage:
3N PE 400 V 50 HZ (3N PE 380-415 V 50 Hz)
1N PE 230 V 50 HZ (1N PE 220-240 V 50 Hz)

* Programme cycle time depending on temperature of feeding water:
Prolongation of wash cycle with cold water connection or single phase execution;
For machine with single phase connection, warm water connection is recommended.

1.0	machine connection: Drain line hose fitted as odour trap in interior of machine	DN 22
1.1	drain (recommended height 70 mm, over 100 mm waste water pump required)	DN 50
2.0	machine connection: fresh water line	G 3/4"
2.2	soft cold water 10°C max. 0,54 mmol/l CaCO ₃ / 53,4 ppm/CaCO ₃ (max.3°GH) approx. water flow rate 0,22 l/s min. flow pressure: 250 kPa / 2,5 bar upstream of the solenoid valve, maximum pressure: 500 kPa / 5 bar stopcock and fine screen = 25 µm	DN 20 G 3/4 a
	3.0	machine connection: electricity connecting cable
3.1	electricity supply to the machine	1N PE 230V ~50Hz
	nominal current / - capacity	17,2 A 3,7 kW
	⚡ Voltage equalising cable	Fuse protection: 20 A
Electrical equipment suitable for supply voltage:		
3N PE 380-415 V 50 Hz / 1N PE 220-240 V 50 Hz		
heat load of the wash room in case of 15 program cycles /h		total ca.1,0 kW perceptible ca.0,7 kW latent ca.0,3 kW
all cables, pipes etc leaving machine		1,6 m
the position of the connection piping can also be mirror-inverted		
Machine Equipment		
(A) Entry height		
Potential free terminals (changeable to 230V) for local dosingsystem		



MP000410983.1.6
© COPYRIGHT by MEIKO

 MEIKO MIDDLE EAST FZE GoldDiamond Park, Building#6, office #206 P.O. Box 282365, U.A.E.-Dubai Phone +971 43 41 51 72 E-MAIL: wat@meiko.de		Revision	
		Reference	DISHWASHER STANDARD DRAWING / ARE
This drawing may not be neither passed to third parties for their information or copied or used for competitive purposes without our consent. All rights reserved. We reserve the right to make changes resulting from technical progress. This drawing was computer generated and is not subject to the checking and any release process. It is also not subject to change management. Please note: This document is only valid in conjunction with the conditions defined in Supplementary Sheet "Important Information". These can be requested from the manufacturer or downloaded from the Partnernet.		Type	UPSTER U 400
		Drawing-No.	S00080960
Scale	1:25	drawn:	17.05.2020 m-iplan
checked:	17.05.2020	m-iplan	

ARE EN

© COPYRIGHT by MEIKO